

Learning Exploration: Changes

This half term, the children will be looking at changes. Children notice changes around them every day. They notice when an object changes direction, a change in their environment or when the weather makes an unexpected change. This half term will build on children's experiences of change and focus on changes made by plants, changes to seasons and changes in types of homes.

Using practical experiences, children will build on their vocabulary as they encounter different types of plants, homes and seasons. Children will be able to explore different objects in activities that support their understanding of similarities and difference.



Hook into learning:

Children will be using their handprints to make a collaborative Beanstalk as an introduction to our focus for the first couple of weeks: Jack and the Beanstalk.

Journey through the exploration

Children will be exploring seasonal changes alongside our 'plants' topic in science.

Children will be encouraged to observe the world around them and recognise change as we move from Autumn to winter, look at how plants change through their life cycle and notice similarities and differences between homes.



Parent/Carer Curriculum Information

The Nest & Den

Linked subjects

Through this exploration, learning will be linked where appropriate, including in the following subjects:

- Geography – differences in human features of homes.
- Science – Seasonal changes
- Science – Plants and the changes they make in their life cycle
- PHSE - Celebrating difference

The following subjects will be taught discretely during this half term:

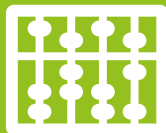
- Maths – Addition and subtraction within 10.
- Maths - Geometry
- DT – Food: cutlery skills
- IT- Digital painting
- RE - Why does Christmas matter to Christians

Children will continue to work on their individualised targets based on the outcomes in their EHCPs, termly SEND plans and any reports from outside agencies.

Maths

Children will explore:

- Numbers within 20, with a focus on understanding the associated numerals, quantity and related images.
- 2D shapes with a focus on identifying, comparing size and orientation.



Writing

Children will be encouraged to work on their fine motor skills and will develop their pre-writing mark making before they are encouraged to form letters with a degree of accuracy.

Where appropriate, children will use colourful semantics to support their understanding of sentence structure.



Parent/Carer Curriculum Information

The Nest & Den

Opportunities to build cultural capital

Cultural capital is the essential knowledge that pupils need to be educated citizens, introducing them to the best that has been thought and said, and helping to engender an appreciation of human creativity and achievement.

At NCSPA, we aim to build cultural capital through experiences such as trips, visitors, music and providing local links.

This half term, options may include:

- Attending trips organised by the class teachers.
- Contributing to Arts week.
- Playing a part in the performances as appropriate towards the end of term.

Opportunities for shared outcomes

Children will have the opportunity to produce or take part in one or more of the following:

- Contributing to Arts week.
- Attending trips organised by the class teachers.
- A collaborative beanstalk made from handprints.



Opportunities to address Equality, Diversity and Inclusion

- PSHE – Exploring ‘same’ and ‘different’ among ourselves.
- Theme of our Learning Exploration – Celebrating changes that occur and encouraging open-minded thinking, welcoming change and new thinking in all aspects of life.



Further curriculum information

If you would like any further information regarding the curriculum, please:

- Speak to Miss Vickery or Miss Kaiser.
- See your child's class information on Seesaw.
- Visit the Curriculum pages on our website.

